

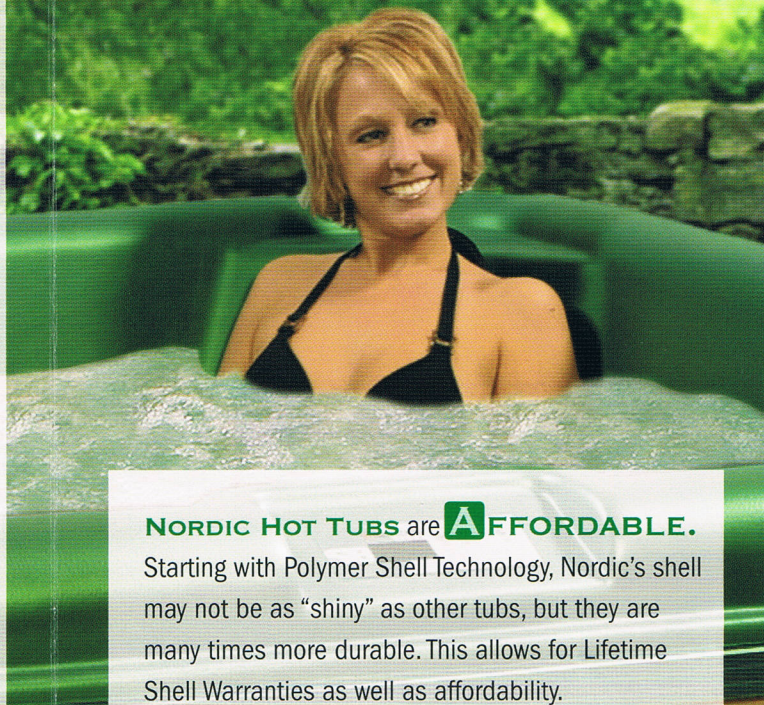
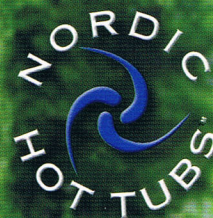
Why **NORDIC** makes sense for You.

For 45 years, the hot tub industry grew and prospered as people's lives improved due to the therapeutic value of soaking in hot water. Not only was it great family fun and romantic, but its therapeutic value, although not promoted, *was making everyone feel better.*

NORDIC HOT TUBS entered the industry as the only manufacturer designing tubs to match training room whirlpool technology. Every Nordic is engineered to provide *high volume circular flow*. Let back massage jets gently soften and soothe your tired and tense muscles, then turn on the whirlpool turbo and experience the same hydrotherapy used by professional athletes in state-of-the-art training rooms.

NORDIC HOT TUBS are **S**IMPLE.
As the industry newcomers built bigger, more powerful and over-jetted spas, Nordic remained focused on keeping its designs simple, providing the best therapy possible.

NORDIC HOT TUBS are **T**HERAPEUTIC.
As many manufacturers drilled hundreds of jets, mainly for "looks," Nordic developed the DTS™ System (Dual Therapy System), allowing great back massage and superior training room whirlpool therapy.



NORDIC HOT TUBS are **A**FFORDABLE.

Starting with Polymer Shell Technology, Nordic's shell may not be as "shiny" as other tubs, but they are many times more durable. This allows for Lifetime Shell Warranties as well as affordability.

NORDIC HOT TUBS are **R**ELIABLE.

From our beginning, we have clamped and glued all water connections. We water test every tub twice and use only superior components in ALL of our models, the same components found in spas priced up to three times more.

Nordic sets the standard for reliability.

www.nordichottubs.com

SIMPLE. THERAPEUTIC.

AFFORDABLE. RELIABLE.